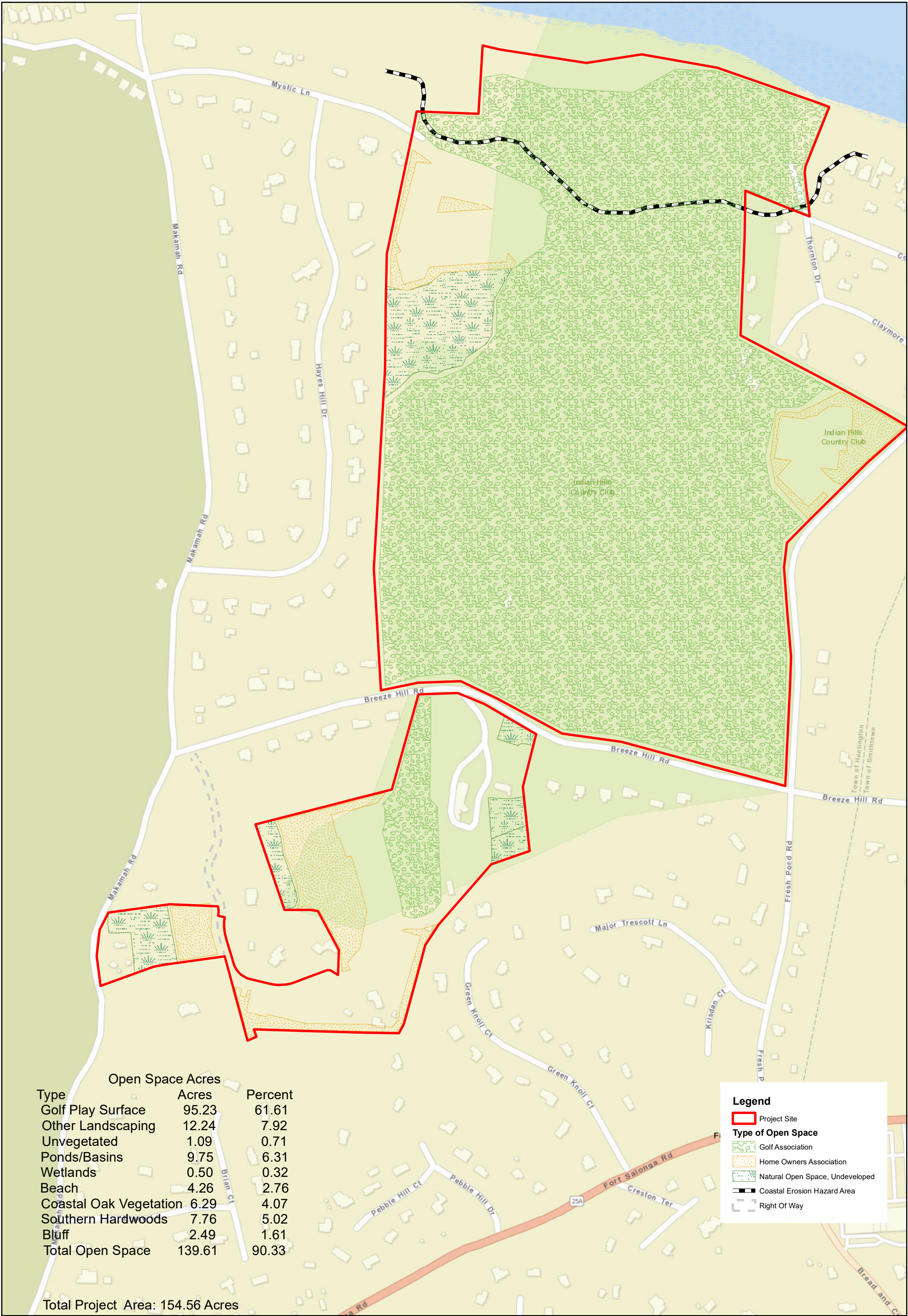


APPENDIX M

REQUESTED MAP AND FIGURE CORRECTIONS



Open Space Acres		
Type	Acres	Percent
Golf Play Surface	95.23	61.61
Other Landscaping	12.24	7.92
Unvegetated	1.09	0.71
Ponds/Basins	9.75	6.31
Wetlands	0.50	0.32
Beach	4.26	2.76
Coastal Oak Vegetation	6.29	4.07
Southern Hardwoods	7.76	5.02
Bluff	2.49	1.61
Total Open Space	139.61	90.33

Total Project Area: 154.56 Acres

Legend

Project Site

Type of Open Space

Golf Association

Home Owners Association

Natural Open Space, Undeveloped

Coastal Erosion Hazard Area

Right Of Way



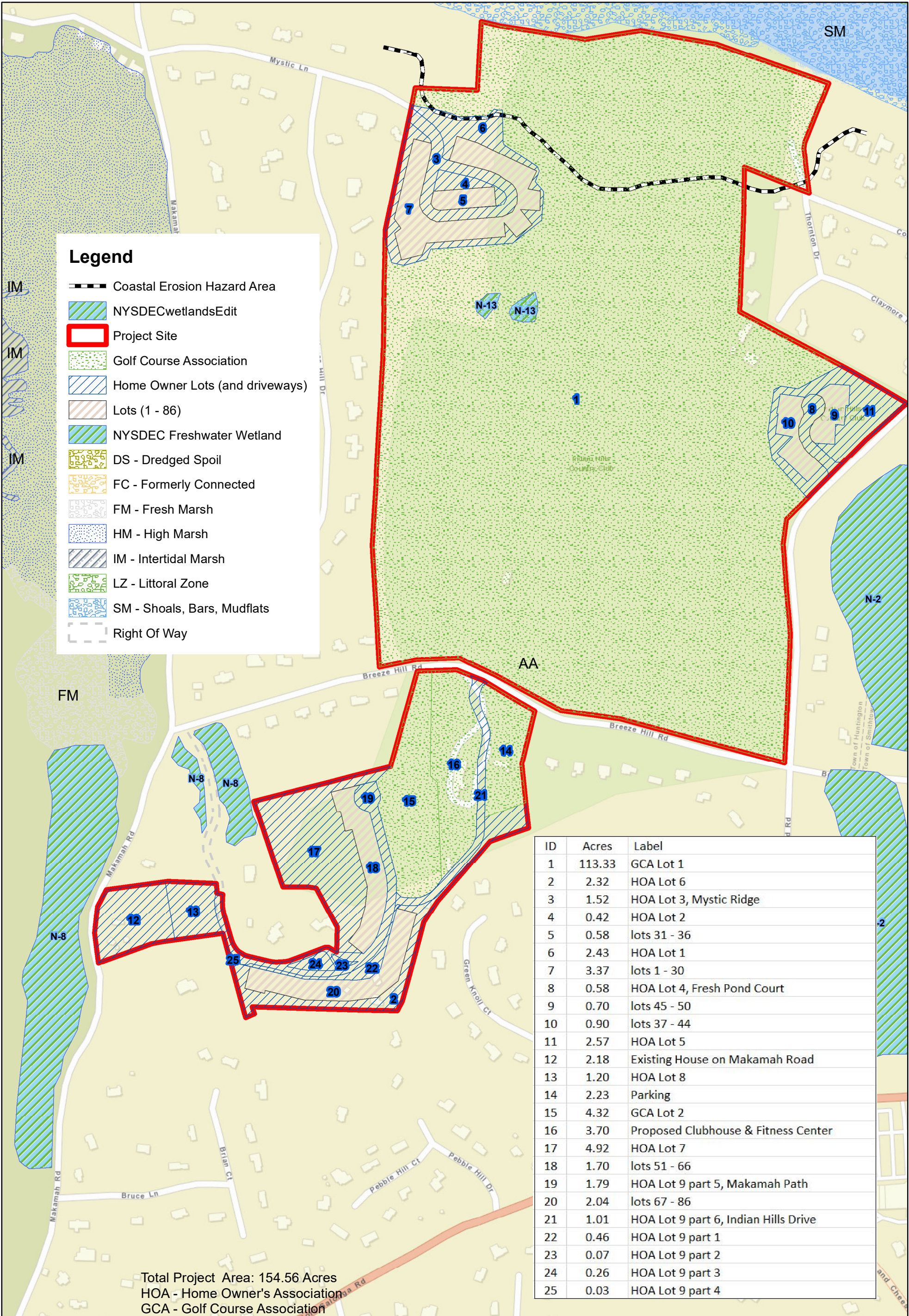
OPEN SPACE PLAN

Source: ESRI WMS; NP 2020 Plan
Scale: 1 inch = 400 feet



The Preserve at
Indian Hills
Northport

Final EIS



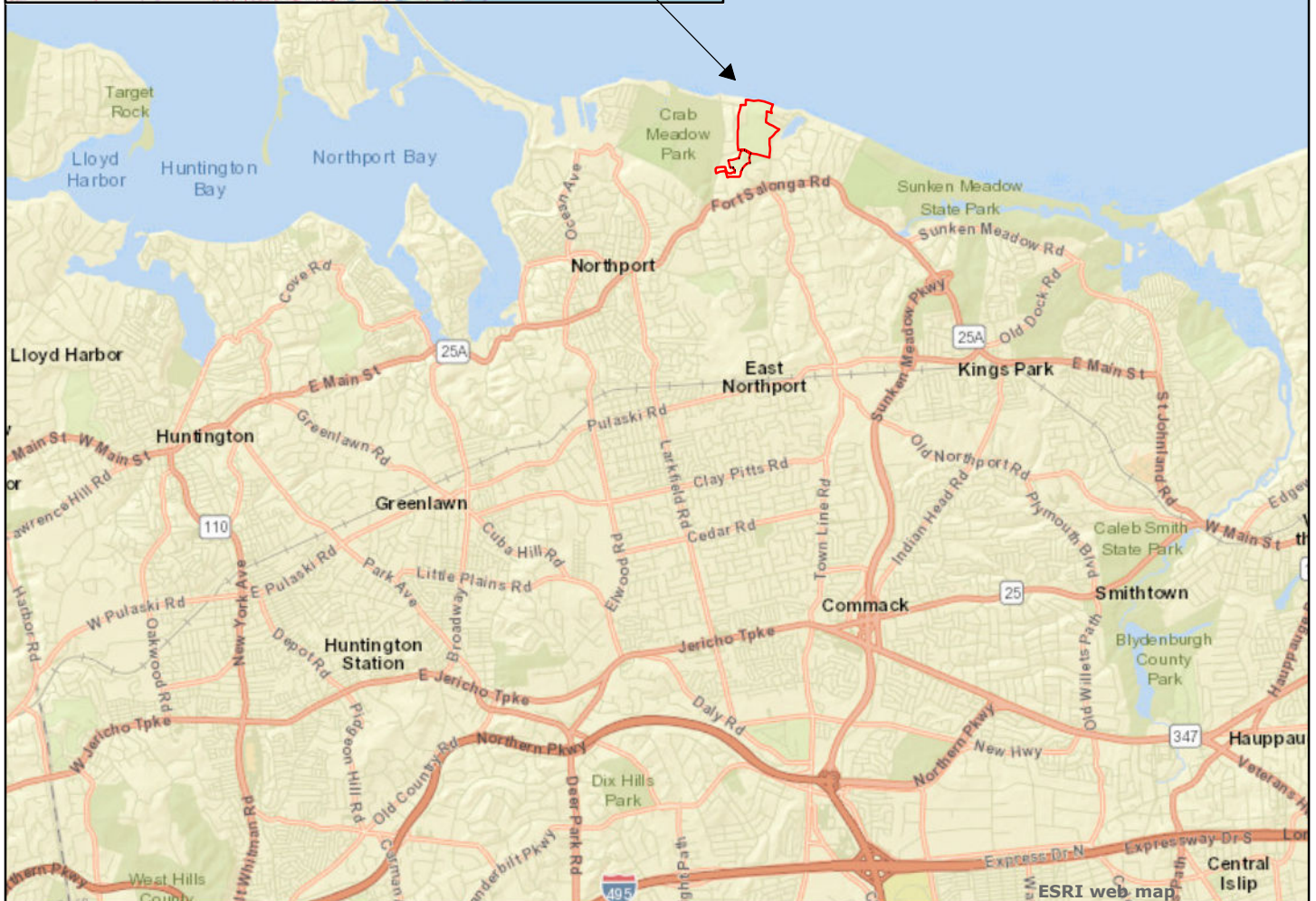
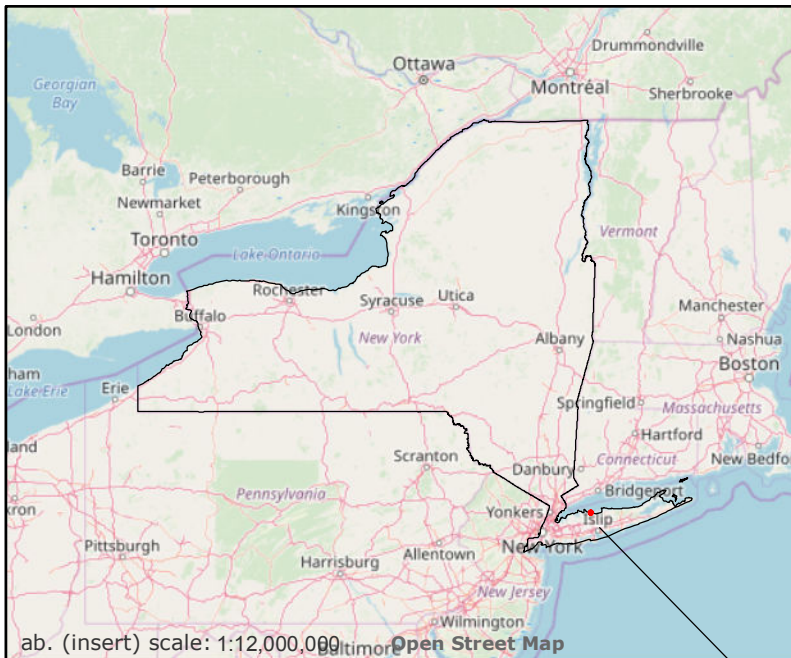
HOA/GCA LAND MAP AREA

Source: ESRI WMS; NP 2020 Plan; NYSDEC Fresh & Tidal Wetlands
Scale: 1 inch = 400 feet



The Preserve at
Indian Hills
Northport

Final EIS



NPV

FIGURE 1-1 LOCATION MAP

Source: ESRI Web Mapping Service
Scale: 1 inch = 10,000 feet



**The Preserve at
Indian Hills
Northport**

Draft EIS



NPV

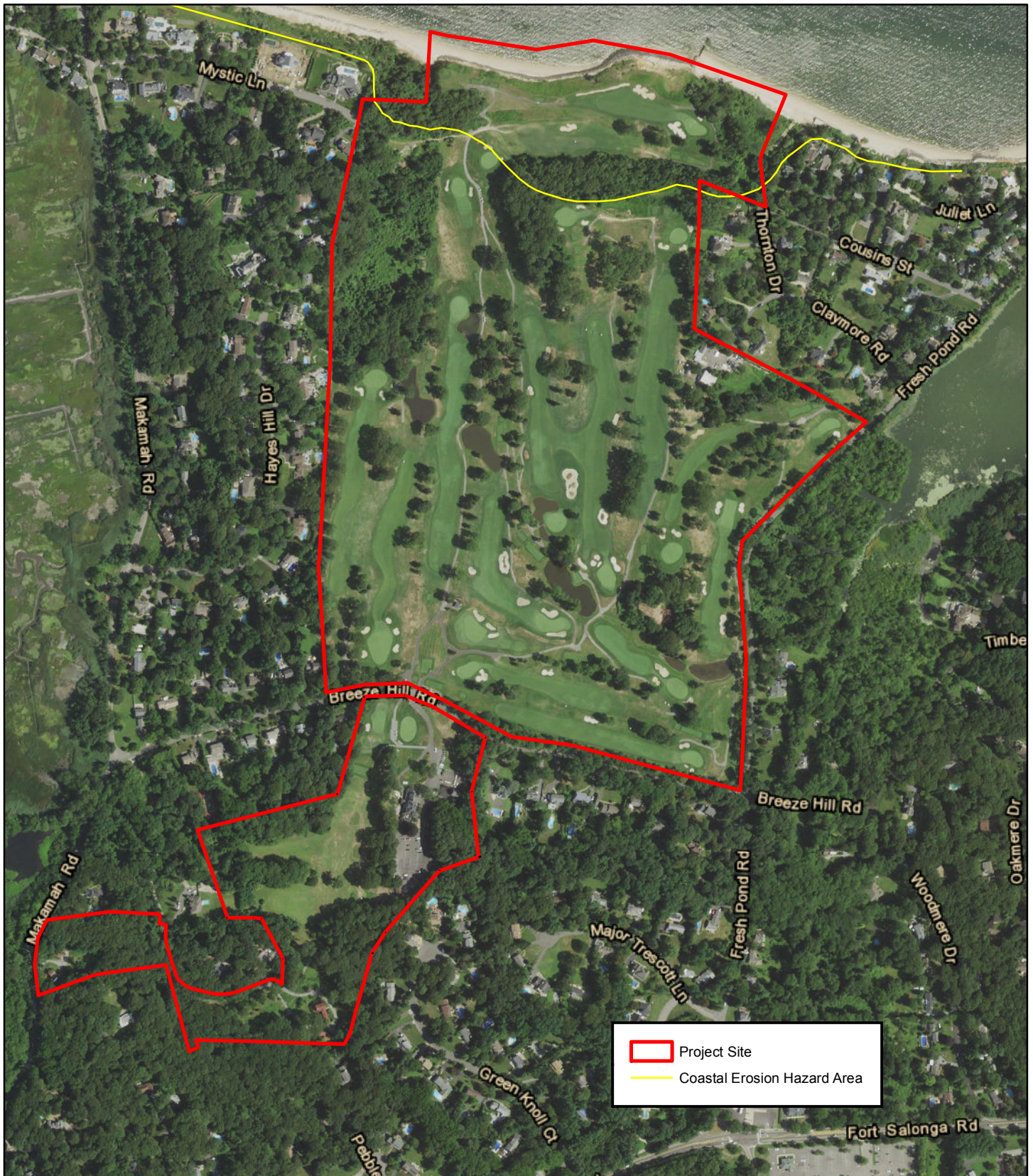
**FIGURE 1-2
AERIAL PHOTOGRAPH**

Source: NYSGIS Orthoimagery Program, 2016
Scale: 1 inch = 600 feet



**The Preserve at
Indian Hills
Northport**

Draft EIS



**FIGURE 1-2
AERIAL PHOTOGRAPH**

Source: NRCS NAIP, 2019 (August)
Scale: 1 inch = 600 feet



**The Preserve at
Indian Hills
Northport**

Draft EIS



NPV

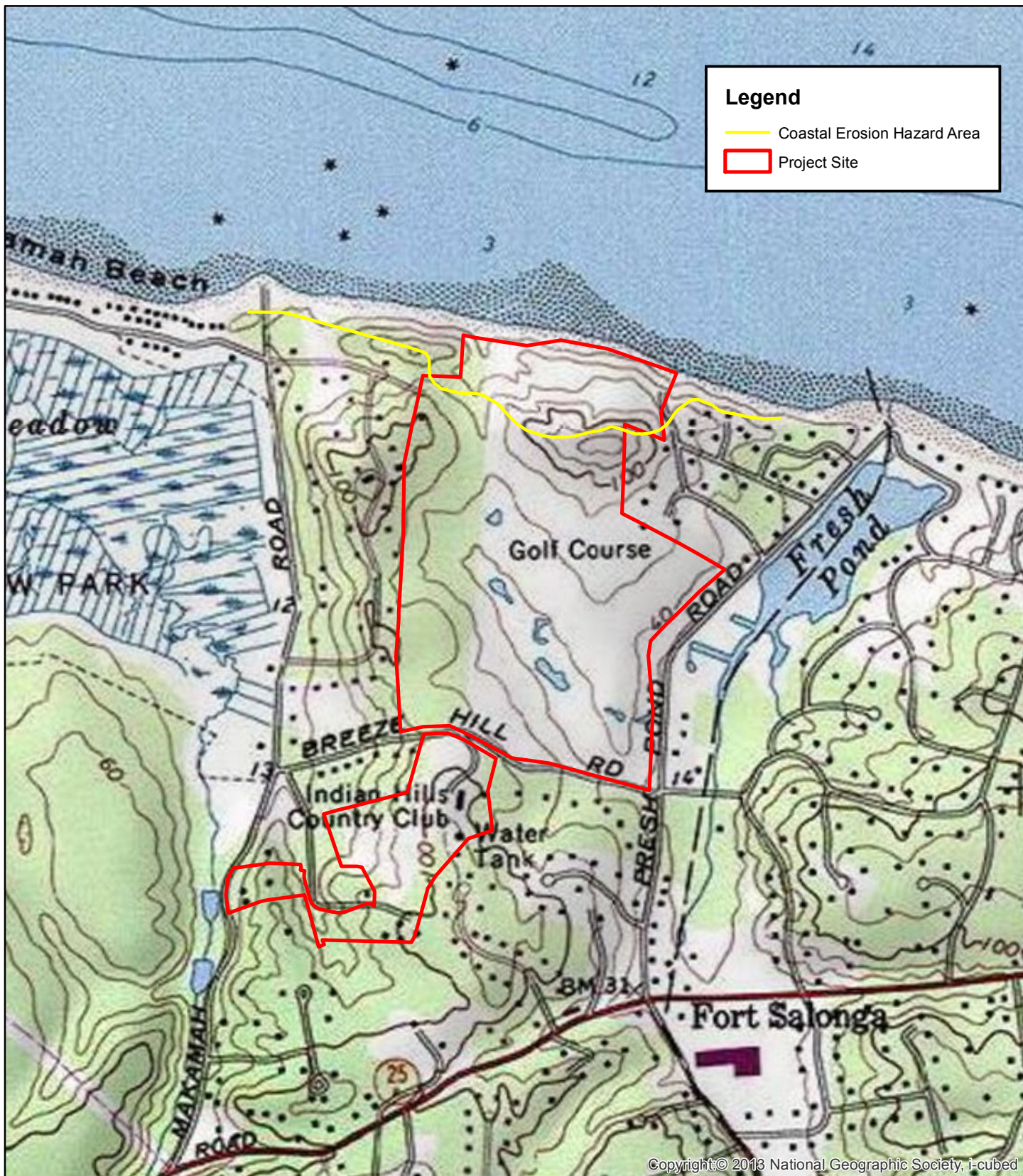
FIGURE 1-3 PARCEL DATA

Source: ESRI Web Mapping Service
Scale: 1 inch = 571.261919 feet



**The Preserve at
Indian Hills
Northport**

Draft EIS



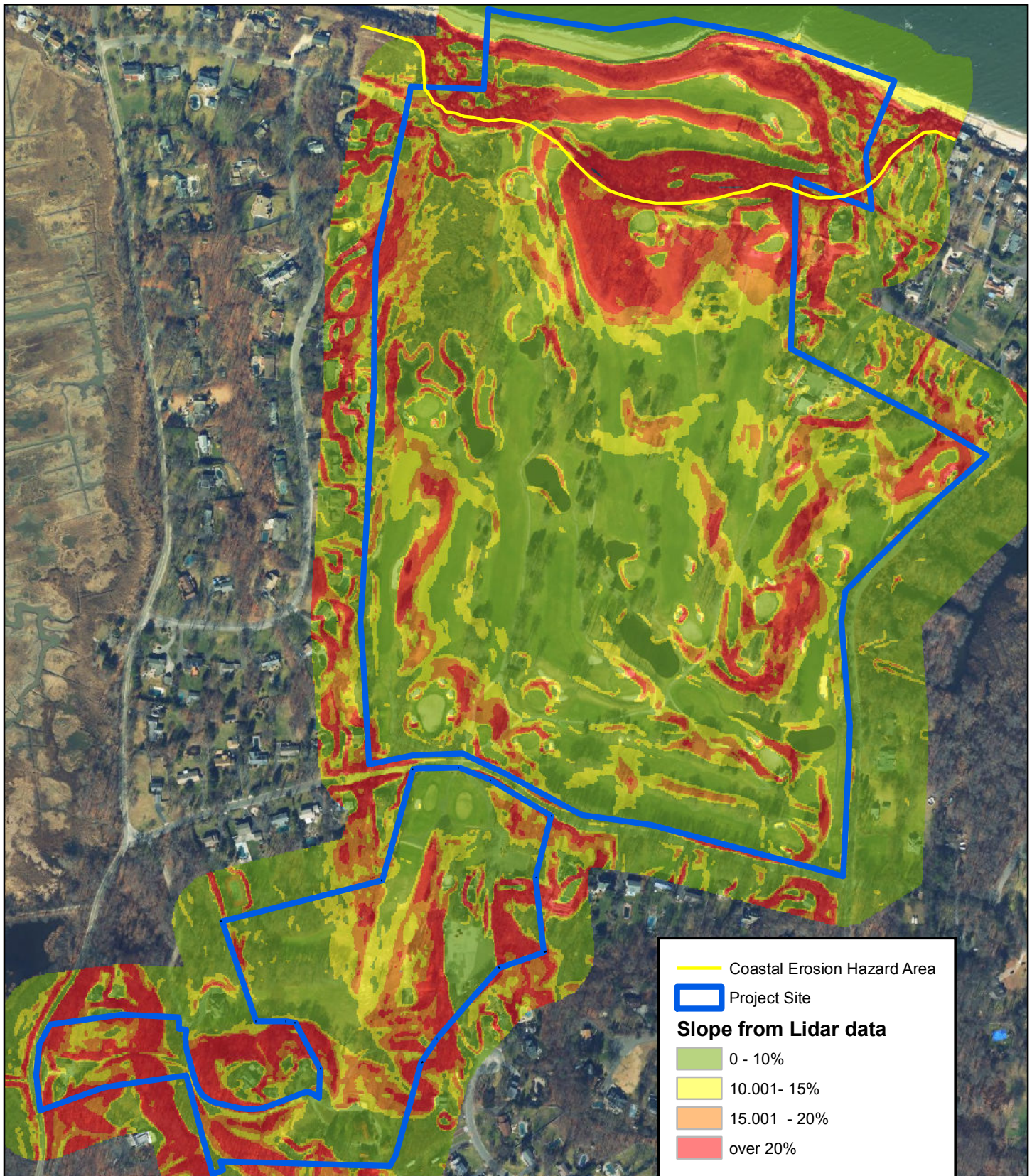
NPV

FIGURE 2-1 TOPOGRAPHIC MAP

Source: USGS Topographic Maps, USGS
Northport Quadrangle
Scale: 1 inch = 1,000 feet



**The Preserve at
Indian Hills
Northport
Draft EIS**



NPV

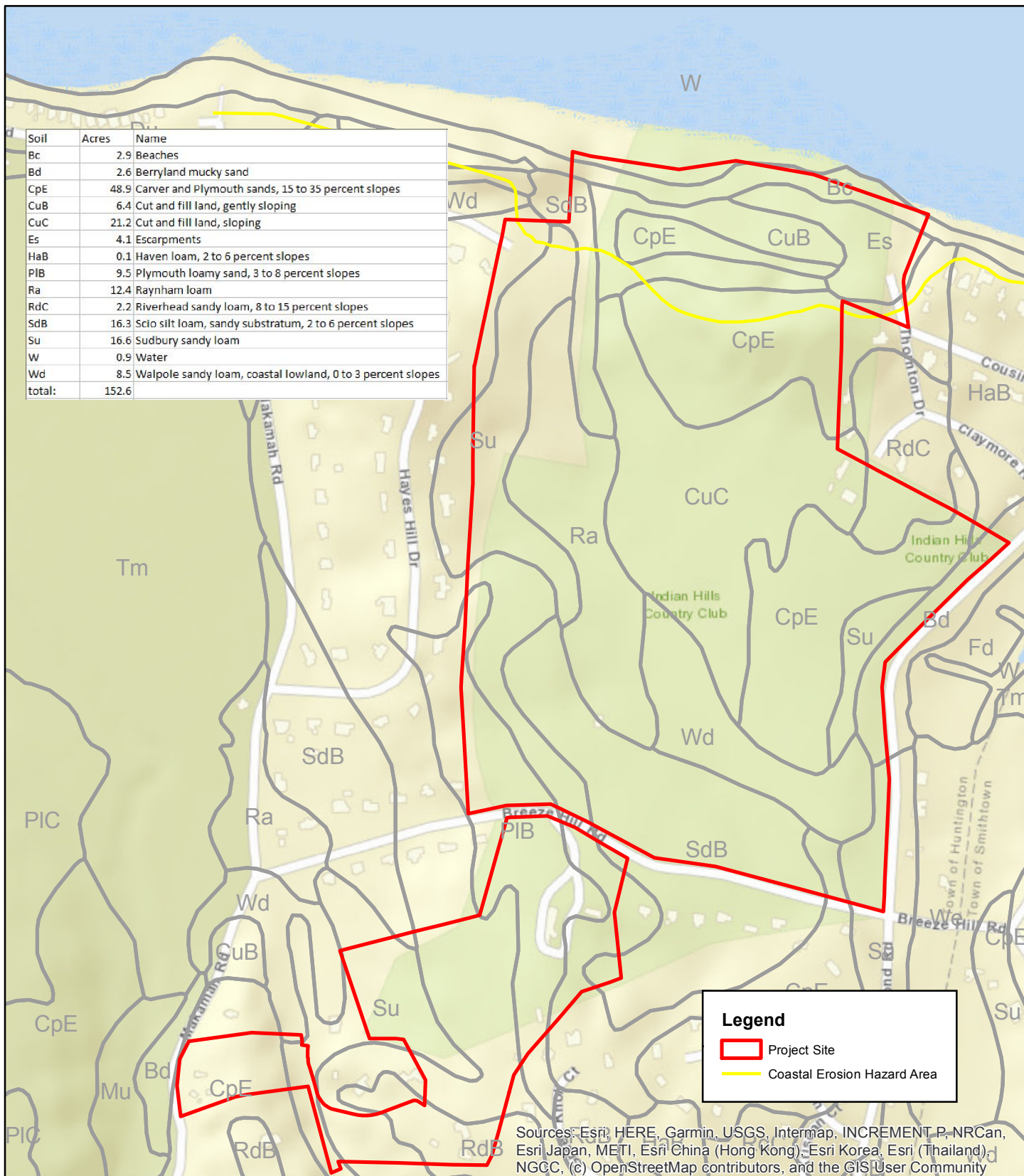
**FIGURE 2-2
SLOPE MAP**

Source: NYS Orthophotography, 2016;
Slope calculated from FEMA Lidar, 2006
Scale: 1 inch = 525 feet



**The Preserve at
Indian Hills
Northport**

Draft EIS



**FIGURE 2-3
SOIL MAP**

Source: ESRI Web Mapping Service, NRCS
Soils Suffolk County, NY
Scale: 1 inch = 600 feet

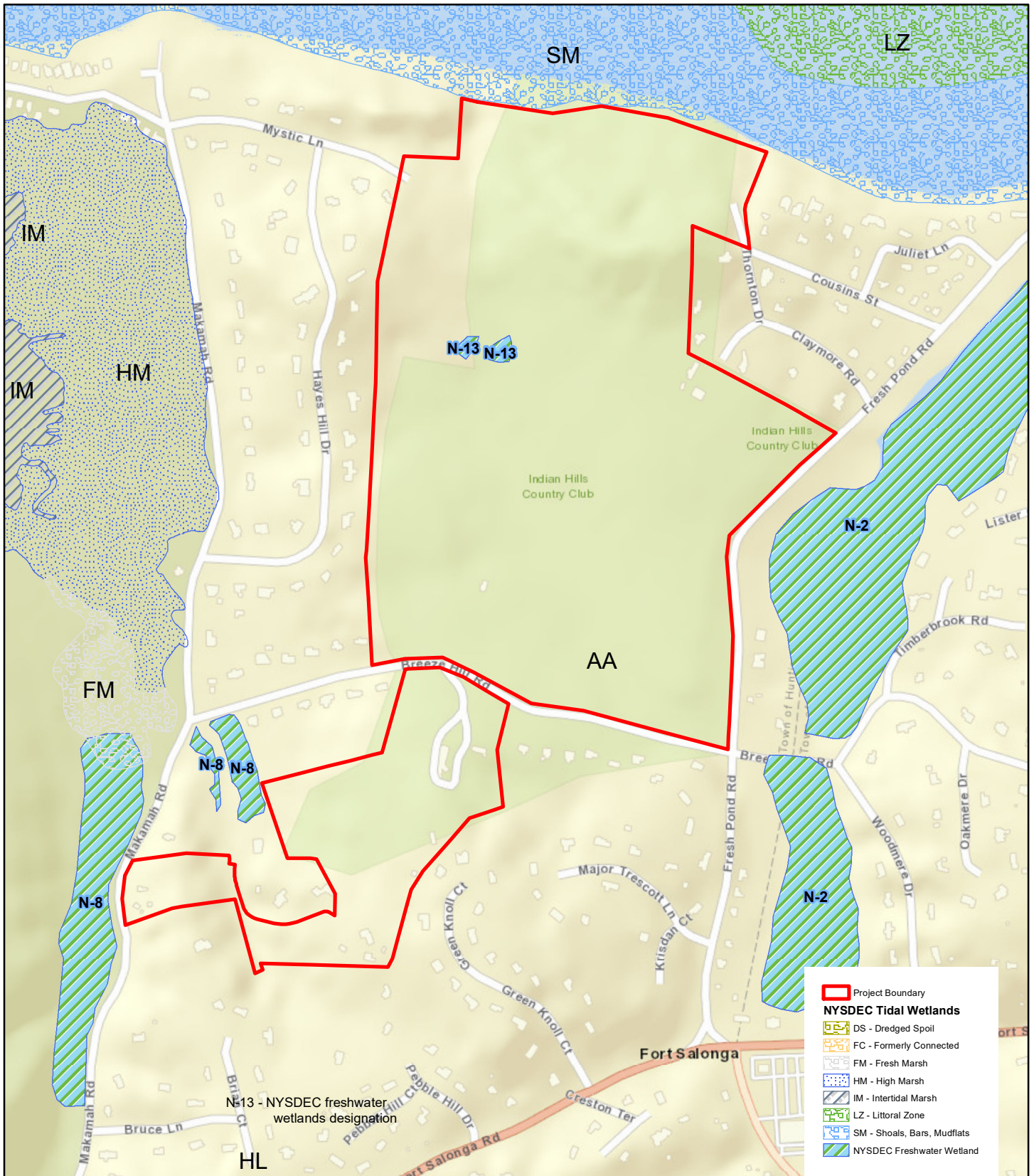


**The Preserve at
Indian Hills
Northport**

Draft EIS



NPV



N-13 - NYSDEC freshwater wetlands designation



NPV

FIGURE 2-4 NYSDEC WETLANDS MAP

Source: ESRI Web Mapping Service, NYSDEC
Freshwater & Tidal Wetlands Maps
Scale: 1 inch = 700 feet



**The Preserve at
Indian Hills
Northport**

Draft EIS



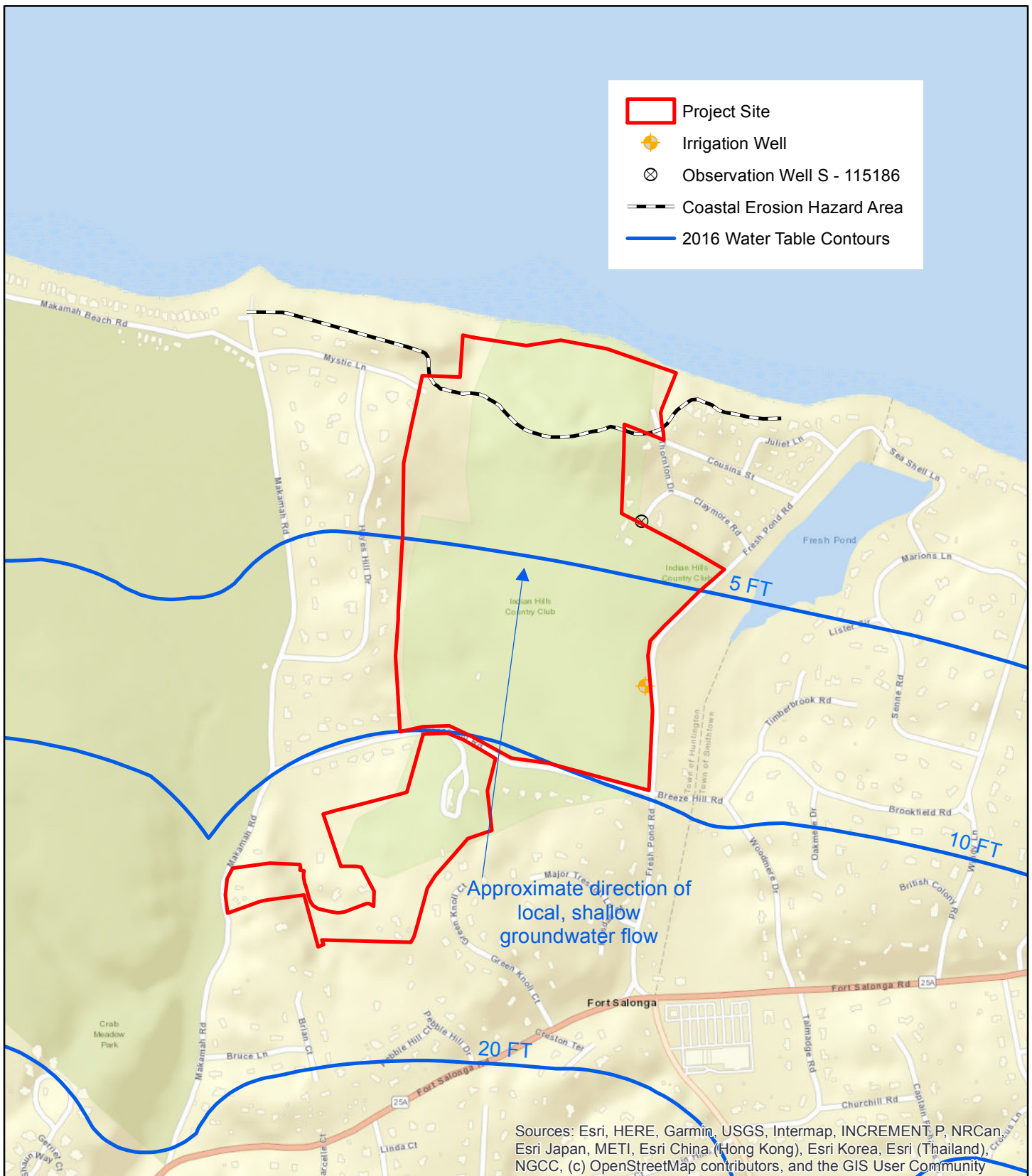
FIGURE 2-5 WATER AND SEDIMENT SAMPLE LOCATION MAP

Source: NYS Orthophotography, 2016
Scale: 1 inch = 600 feet



**The Preserve at
Indian Hills
Northport**

Draft EIS



NPV

FIGURE 2-6 WATER TABLE CONTOUR MAP

Source: ESRI Web Mapping Service, USGS
Scientific Investigations Map 3398, 2016 data
Scale: 1 inch = 1,000 feet



**The Preserve at
Indian Hills
Northport**

Draft EIS





NPV

FIGURE 3-1 LAND USE MAP

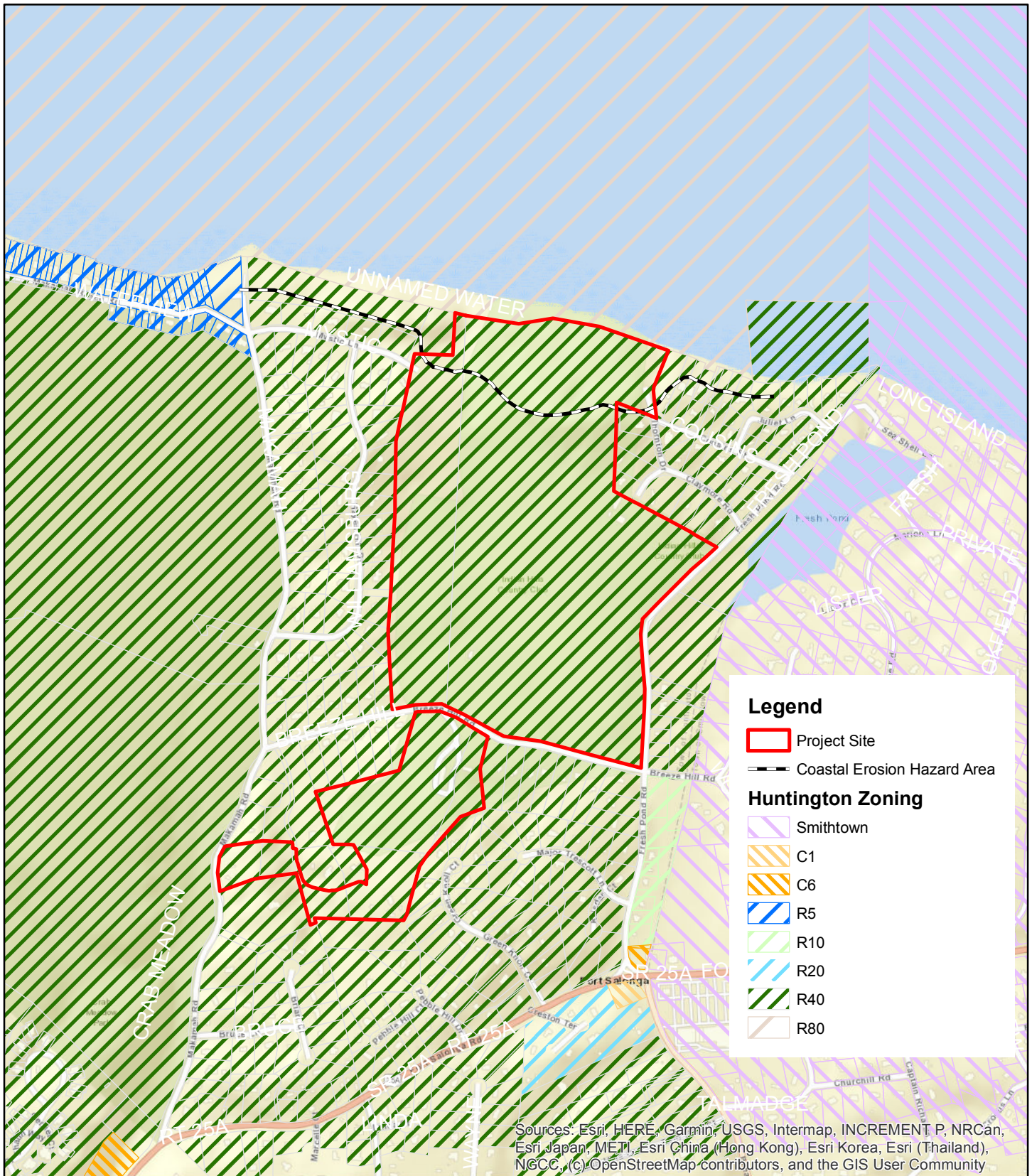
Source: NYS Orthophotos, 2016

Scale: 1 inch = 550 feet



**The Preserve at
Indian Hills
Northport**

Draft EIS



NPV

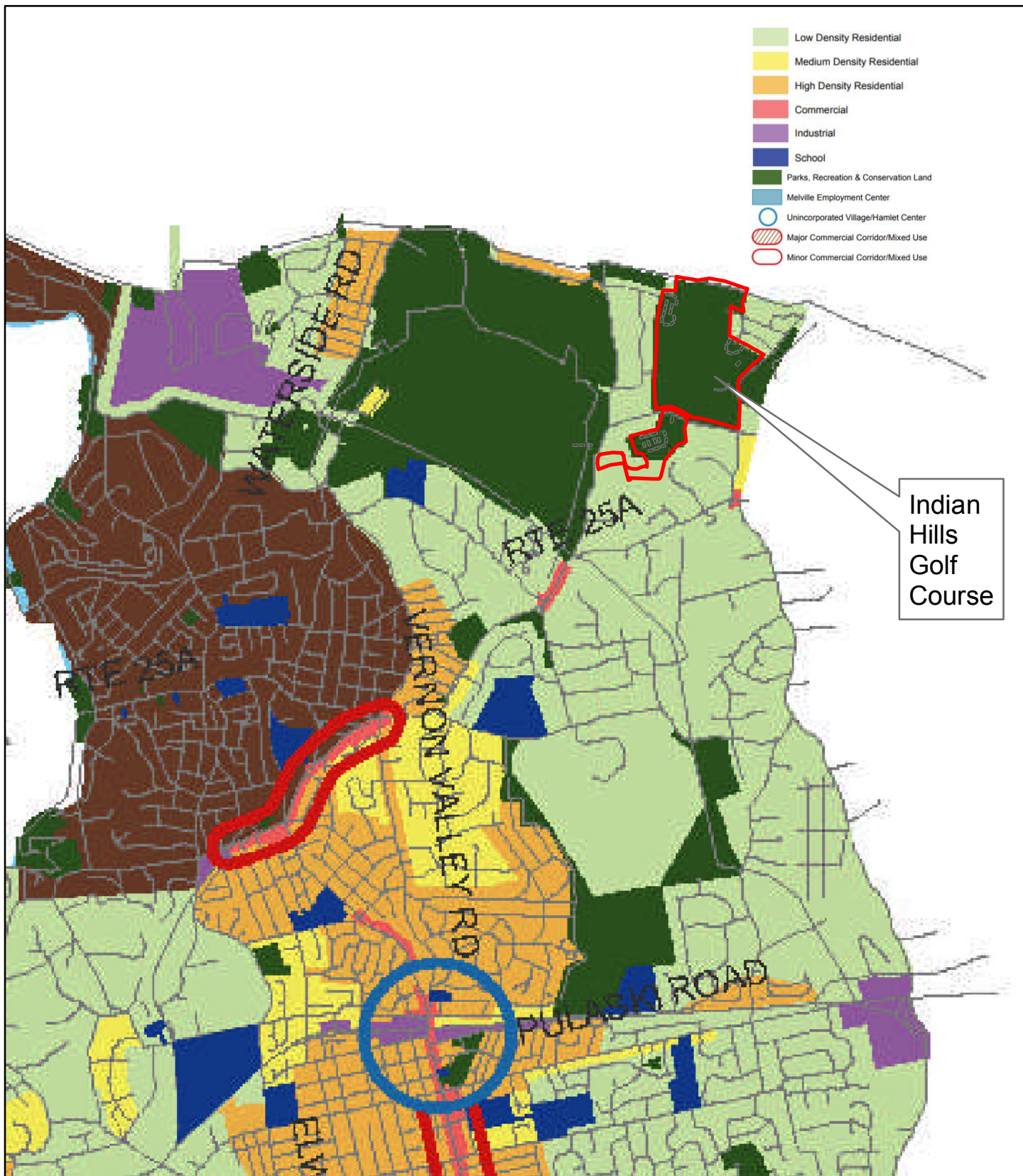
FIGURE 3-2 ZONING MAP

Source: Huntington Zoning, retrieved Oct 2016,
<http://geo.huntingtonny.gov/helix/>
 Scale: 1 inch = 1,000 feet



**The Preserve at
Indian Hills
Northport**

Draft EIS



**FIGURE 3-3
GENERALIZED FUTURE
LAND USE MAP**

Source: ESRI Web Mapping Service; Horizons
2020: Huntington Comprehensive Plan Update
Scale: 1 inch = 3,000 feet

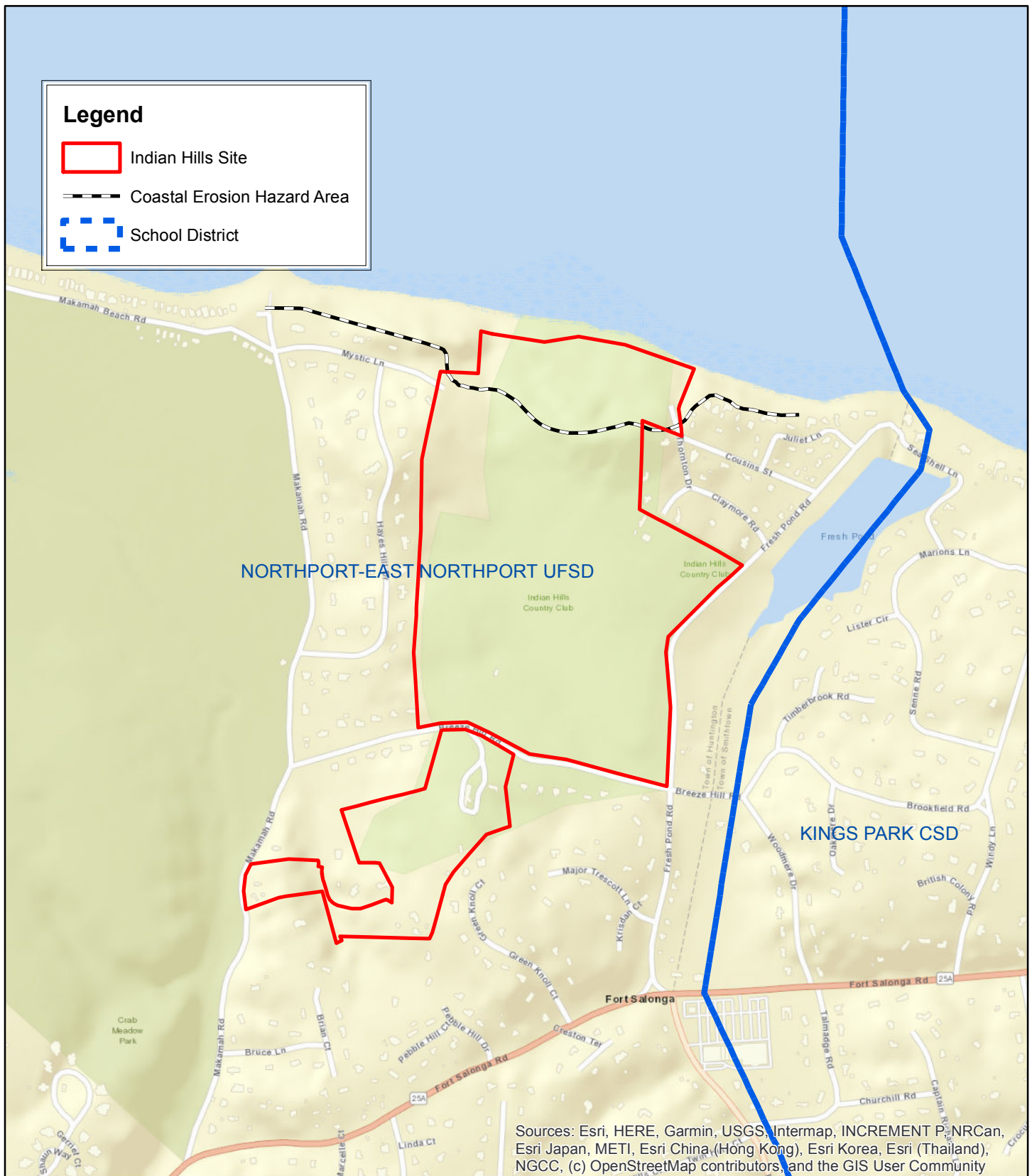


**The Preserve at
Indian Hills
Northport**

Draft EIS



NPV



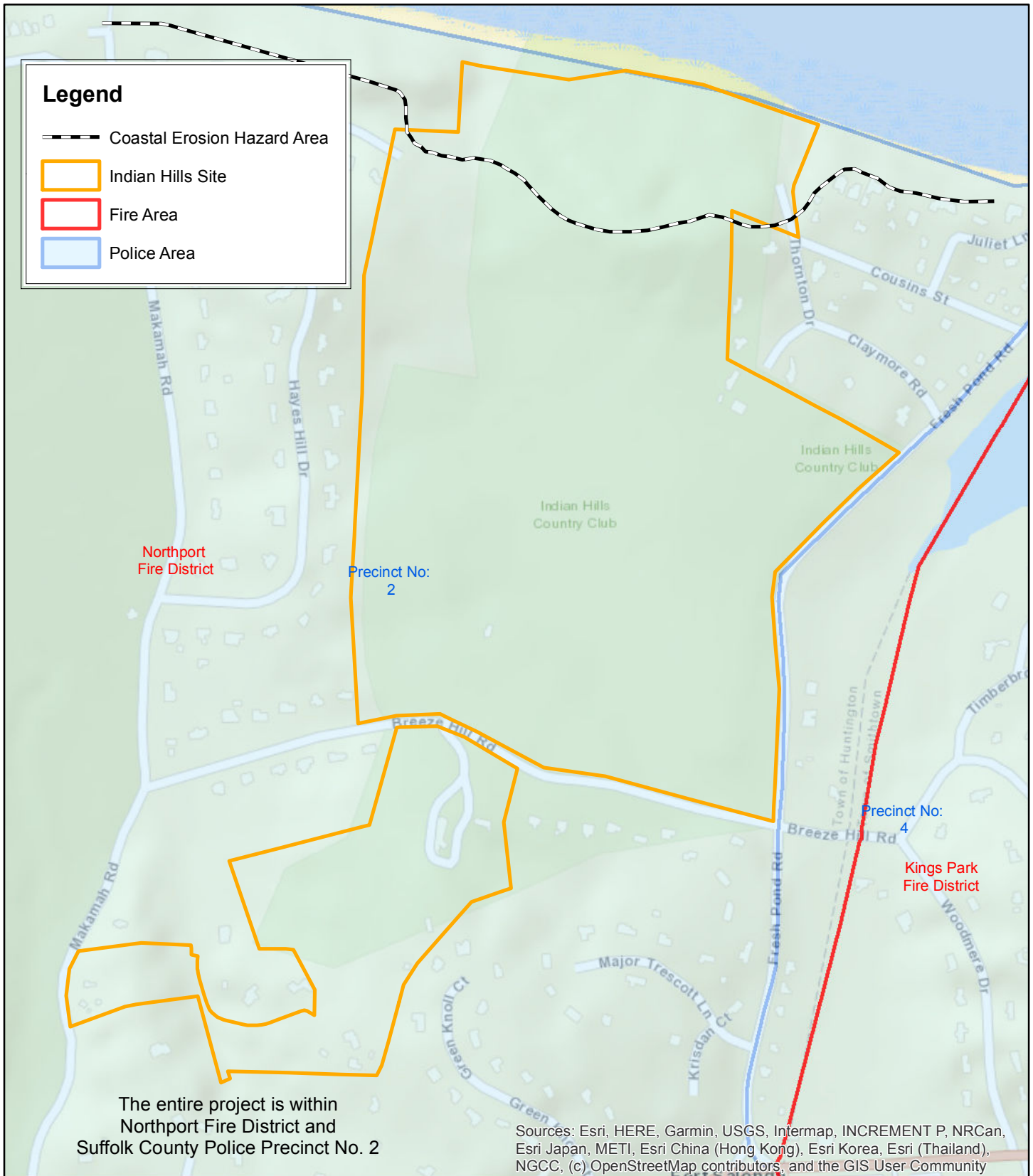


FIGURE 3-5 COMMUNITY SERVICES SAFETY

Source: ESRI Web Mapping Service;
Suffolk County data
Scale: 1 inch = 600 feet



NPV

**The Preserve at
Indian Hills
Northport**

Draft EIS



FIGURE 3-6 WATER SUPPLY AND MONITORING WELL MAP

Source: ESRI Web Mapping Service, Suffolk
SWAP dataset
Scale: 1 inch = 2,000 feet

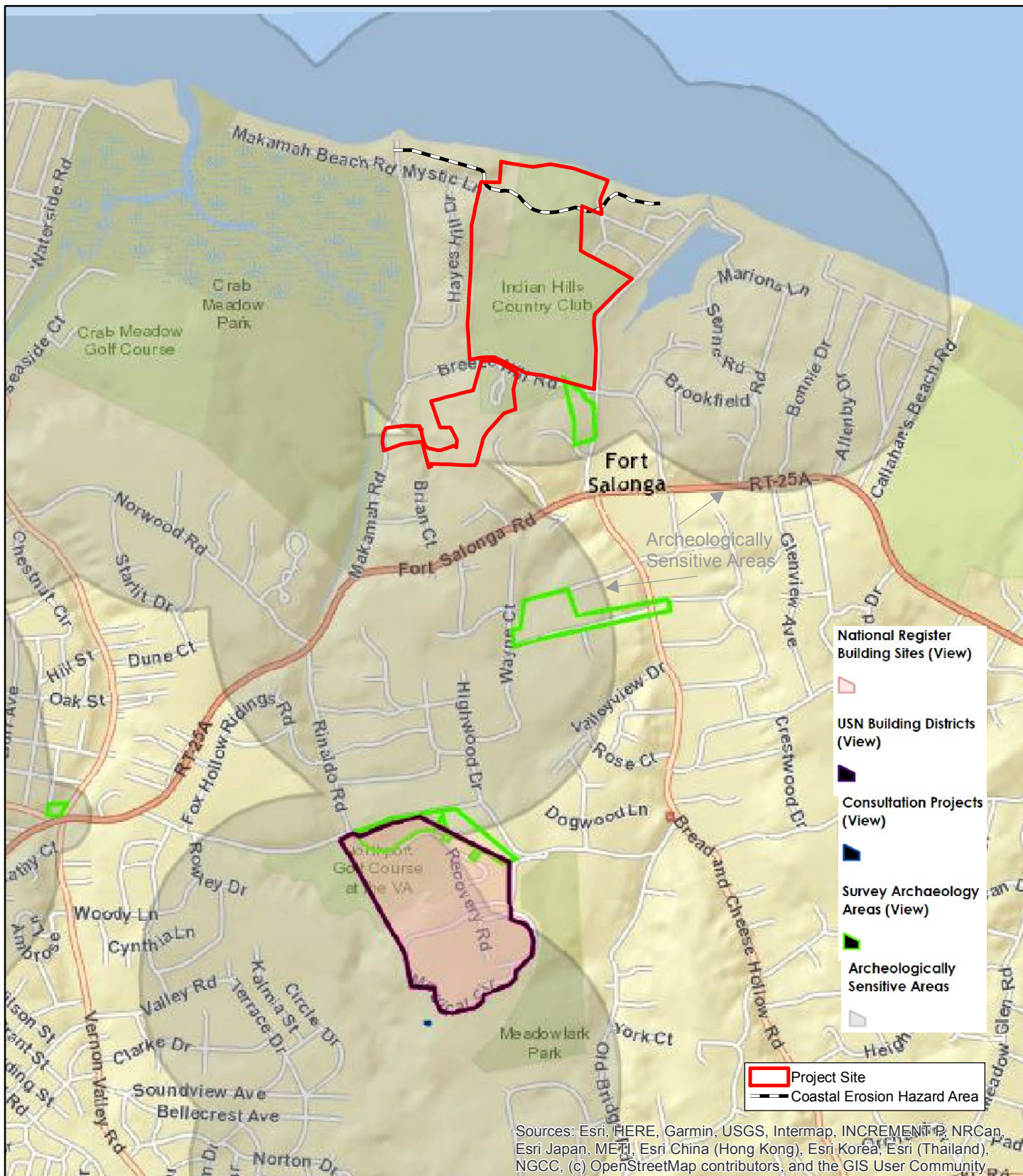


**The Preserve at
Indian Hills
Northport**

Draft EIS



NPV



**FIGURE 3-7
CULTURAL RESOURCES**

Source: ESRI Web Mapping Service, NYS DEC
cris.parks.ny.gov
 Scale: 1 inch = 2,000 feet



**The Preserve at
Indian Hills
Northport**

Draft EIS



NPV





 PhotoArrows

 Project Site

 Coastal Erosion Hazard Area

NYS ITS GIS Program Office, Esri, HERE, Garmin, (c) OpenStreetMap contributors

	<div>PHOTO LOCATION KEY</div> <div>Source: NYS Orthophotography, 2016 Scale: 1 inch = 400 feet</div> <div></div>	<div>Indian Hills Country Club Draft EIS</div>